

Erratum. New Cembrene Diterpenes from the Resins of *Eremophila* Species

Emilio L. Ghisalberti, Phillip R. Jefferies, Trevor A. Mori, and Edi Twiss

J. Nat. Prod., **1994**, 57 (7), 1029-1029 • DOI:
10.1021/np50109a028 • Publication Date (Web): 01 July 2004

Downloaded from <http://pubs.acs.org> on April 4, 2009

More About This Article

The permalink <http://dx.doi.org/10.1021/np50109a028> provides access to:

- Links to articles and content related to this article
- Copyright permission to reproduce figures and/or text from this article

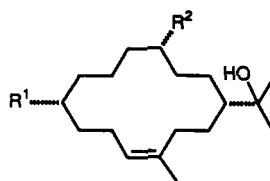
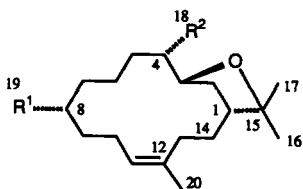


ACS Publications
High quality. High impact.

Journal of Natural Products is published by the American
Chemical Society, 1155 Sixteenth Street N.W., Washington,
DC 20036

ERRATUM

For the paper by Ghisalberti *et al.* entitled "New Cembrene Diterpenes from the Resins of *Eremophila* Species," *J. Nat. Prod.*, **57**, 100 (1994), the structures of compounds **1–9** on p. 101 are incorrect, due to a printer's error. They are as follows:



- | | | | |
|----------|---|----------|--|
| 1 | $R^1 = \text{CO}_2\text{H}, R^2 = \text{CH}_2\text{OAc}$ | 6 | $R^1 = \text{CH}_2\text{OH}, R^2 = \text{CO}_2\text{H}$ |
| 2 | $R^1 = \text{CO}_2\text{CH}_3, R^2 = \text{CH}_2\text{OAc}$ | 7 | $R^1 = \text{CH}_2\text{OH}, R^2 = \text{CO}_2\text{CH}_3$ |
| 3 | $R^1 = R^2 = \text{CH}_2\text{OH}$ | 8 | $R^1 = R^2 = \text{CH}_2\text{OH}$ |
| 4 | $R^1 = \text{CHO}, R^2 = \text{CH}_2\text{OCOCH}_2\text{CO}_2\text{CH}_3; \Delta^7$ | 9 | $R^1 = \text{CO}_2\text{CH}_3, R^2 = \text{CH}_2\text{OH}$ |
| 5 | $R^1 = R^2 = \text{CO}_2\text{CH}_3$ | | |